

PART OF S.W. 1/4 OF SEC. 26, T.6N., R.2W., S.L.B. & M.

128

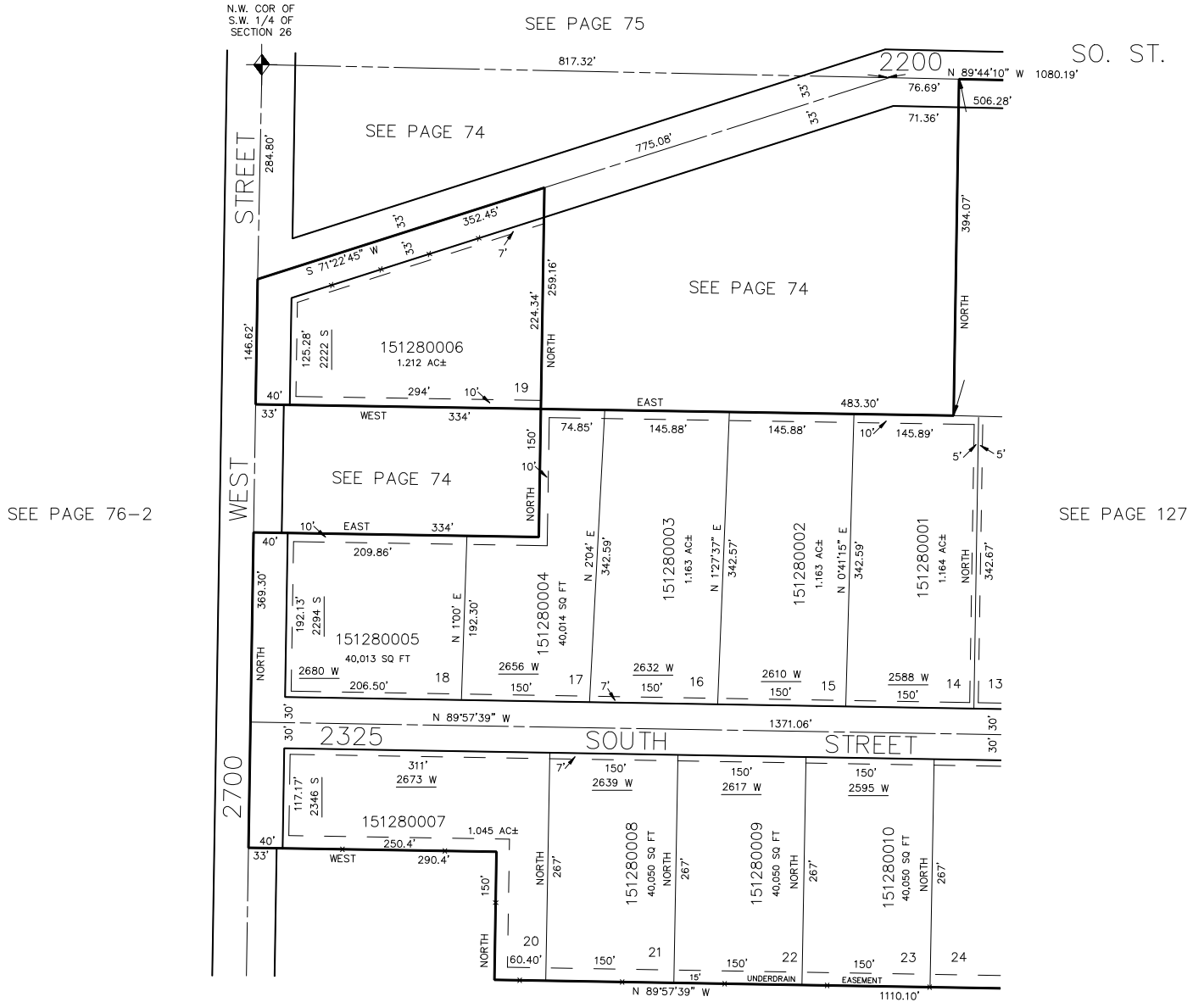
RICH ACRES SUBDIVISION

LOTS 14-23

IN WEST HAVEN CITY

SCALE 1" = 100'

TAXING UNIT: 276



ALL EASEMENTS AS INDICATED ON THIS PLAT ARE FOR THE INSTALLATION OF PUBLIC SERVICE UTILITY, IRRIGATION OR DRAINAGE LINES.

SEE PAGE 74

FOR COMPLETE ENG DATA SEE ORIGINAL DEDICATION PLAT IN BOOK 19, PAGE 85 OF RECORDS.